

# CELL BIOLOGY LAB

## Plasma Membrane Permeability

Pre-lab Resources  
Dr. Lisa Brinn



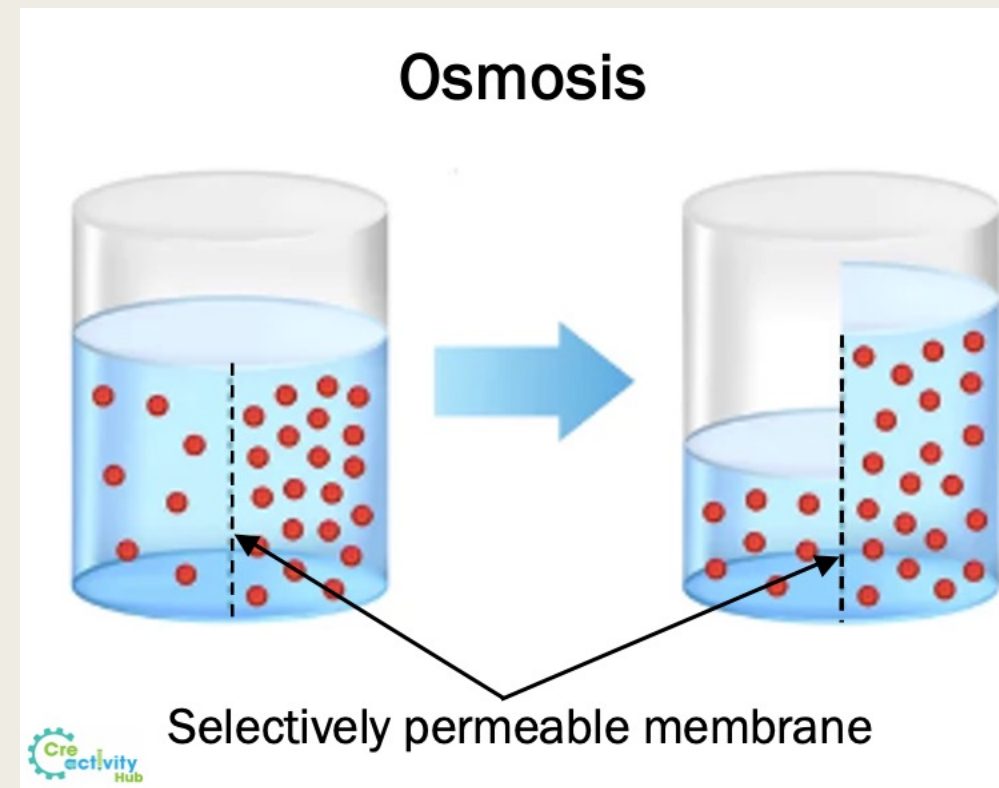
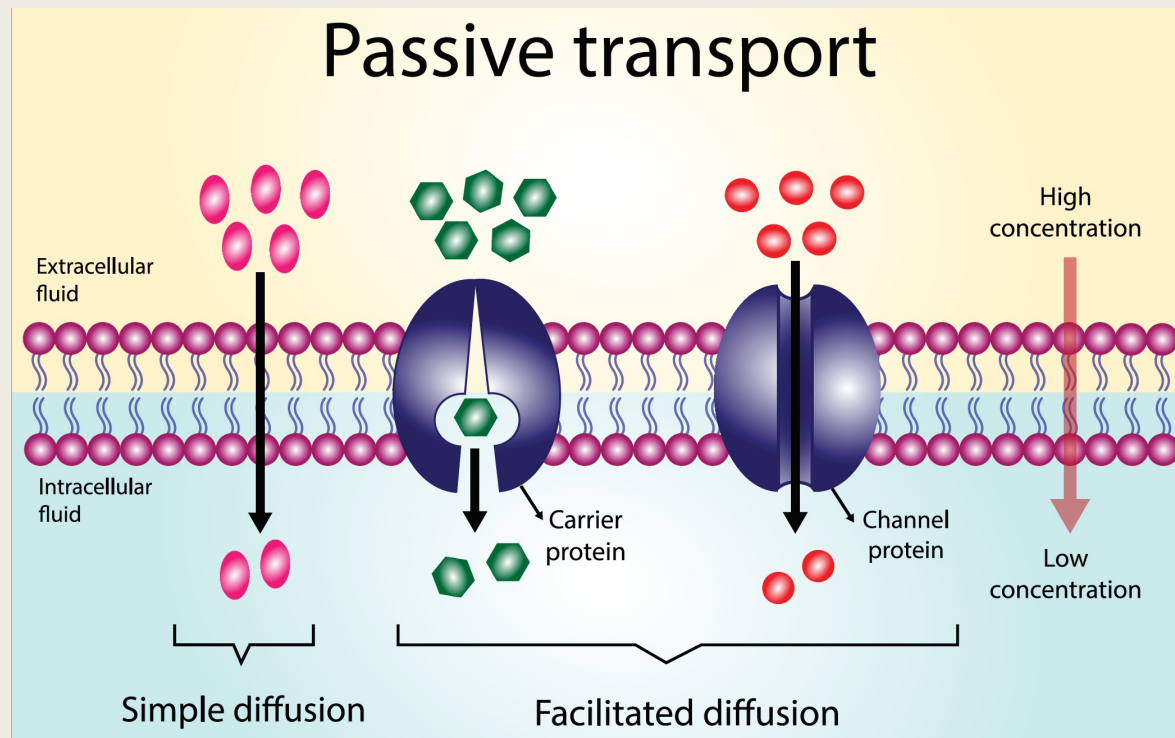
# Membrane Permeability

- Barrier effectiveness
  - *Greater its permeability – easier for substances to cross*
  - *Impermeable – nothing cross the membrane*
  - *Freely permeable – no resistance during crossing*
- Plasma membrane
  - *Selectively permeable*
    - In between impermeable and freely permeable
    - Factors determining permeability:
      - *Substance's size*
      - *Electrical charge*
      - *Molecular shape*
      - *Solubility*

# Passive vs Active Processes

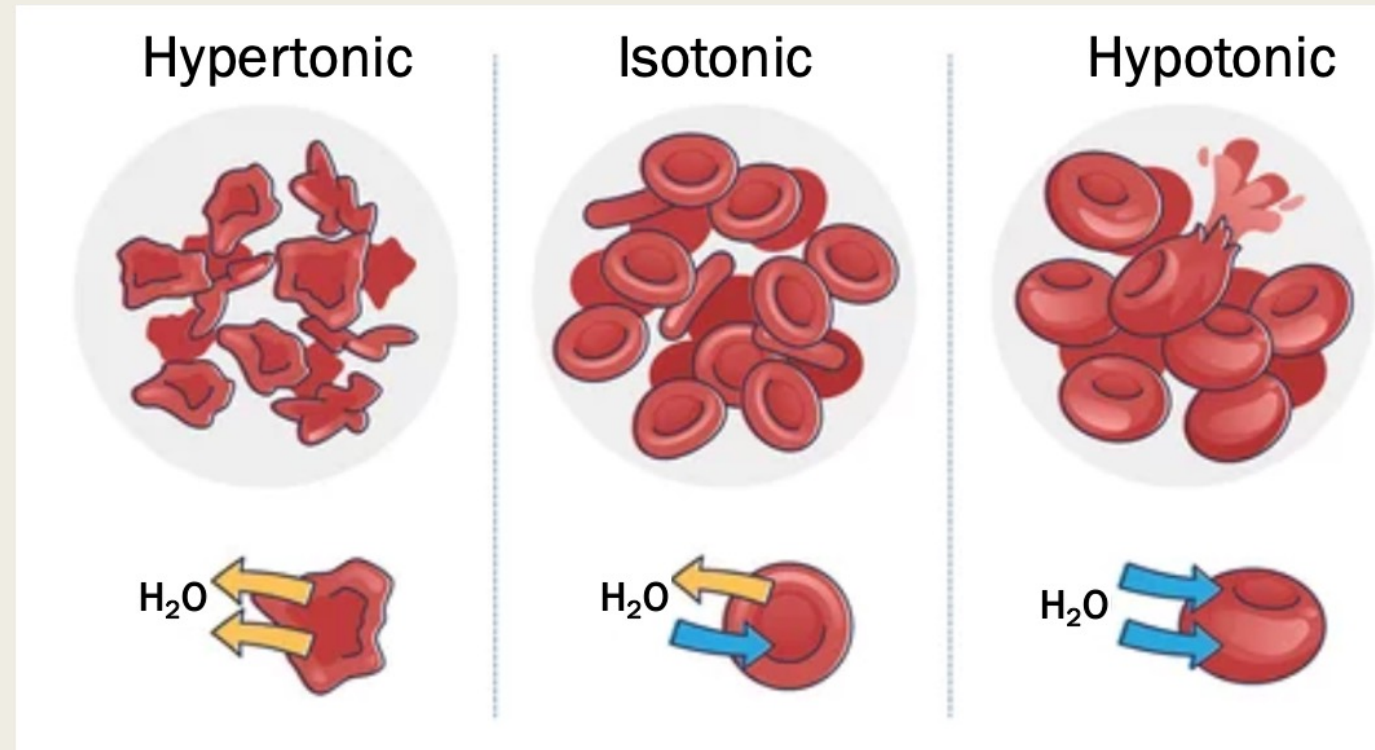
- Passive Process
  - *Simple diffusion, facilitate diffusion and osmosis*
- Active Process
  - *Active transport, endocytosis and exocytosis*

# Passive Process

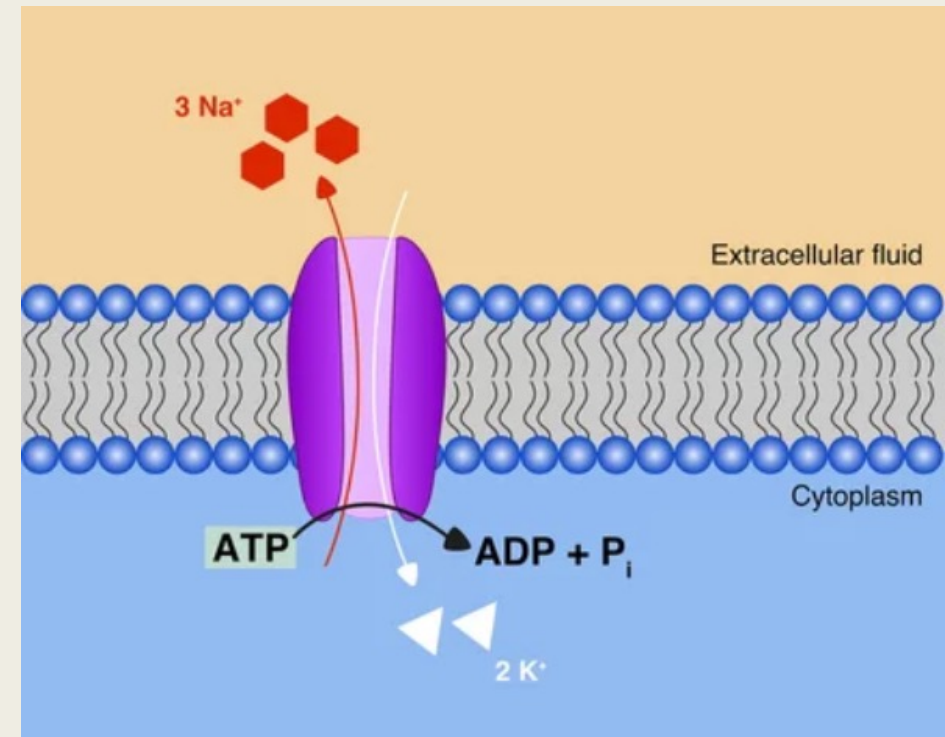
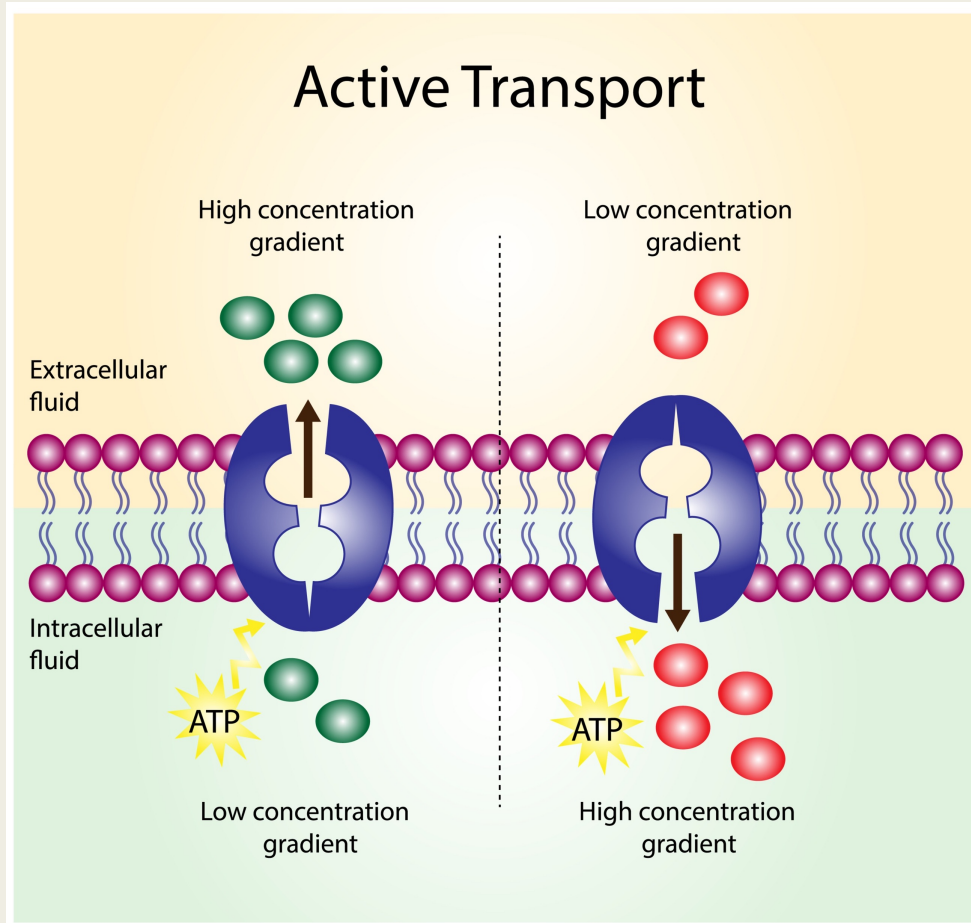


# Water Movement With Cells

- Isotonic
  - *Equal tension*
- Osmosis occurs when there is an imbalance of solutes
  - *Hypertonic*
    - Water leaves
  - *Hypotonic*
    - Water enters



# Active Process



# Endocytosis and Exocytosis

